



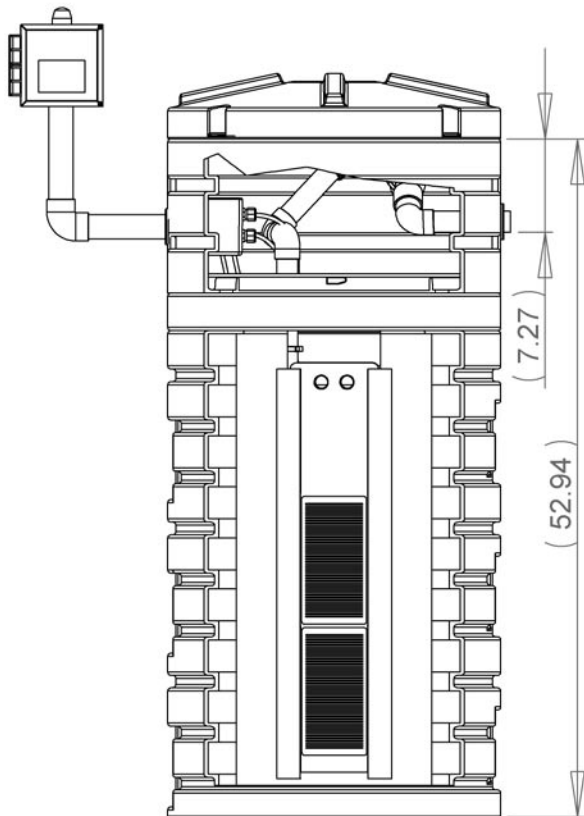
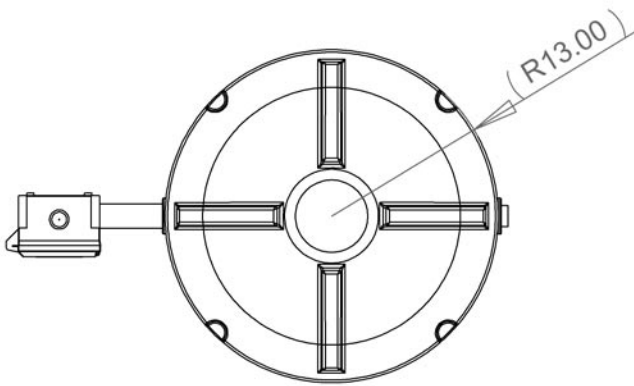
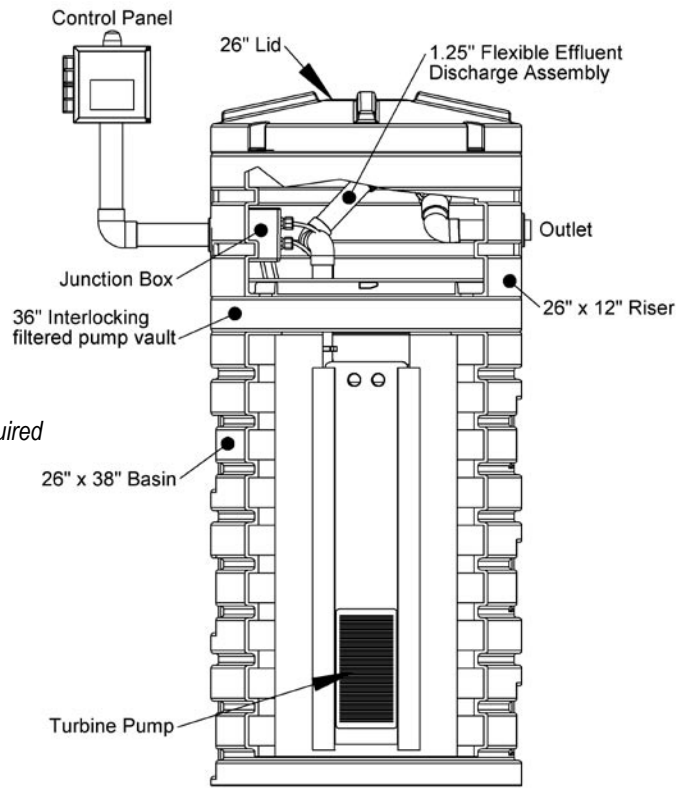
STEP System

(Effluent Basin Pump Packages)

SS-410-10/20/30

Features

- Ideal for repairs and sites with limited space
- Includes a 10, 20 or 30 plus gpm turbine effluent pump
- Designed for higher performance onsite systems where high heads are required
- Includes an interlocking filtered vault to protect pump and field from solids
- Includes all components required to install a pump outside a tank



Components

- **RB-B-26x38:** 26" x 38" basin
- **RB-R-26x12:** 26" x 12" riser
- **RB-L-26:** 26" lid
- **FPV-I36-4:** 36" interlocking filtered pump vault
- **P-TE-10/20/30:** 1/2 hp, 10, 20 or 30 gpm turbine effluent pump
- **PDS-EDF-1.25:** 1.25" flexible effluent discharge assembly
- **PDS-GT-1.25:** 1.25" water-tight grommet
- **PDS-GT-4.0:** 4" water-tight grommet
- **AC-JSB:** Junction splice box with 4 cord grips
- **AC-CP-S-C:** Simplex contactor control panel
- **PDS-GT-1.50:** 1.50" water-tight grommet

Warranty for Defects in Material and Workmanship

- **Pump** - 3 Years
- **Alarms/controls** - 3 Years
- **Basin, riser and lid** - 2 Years
- **All other components** - 1 Year

AutoCad files at www.quanics.net

1-877-QUANICS - www.quanics.net



© 2007, Quanics Inc. All rights reserved.
Product(s) covered by one or more U.S.
and/or International patents. Other U.S. and
International patents may be pending.

