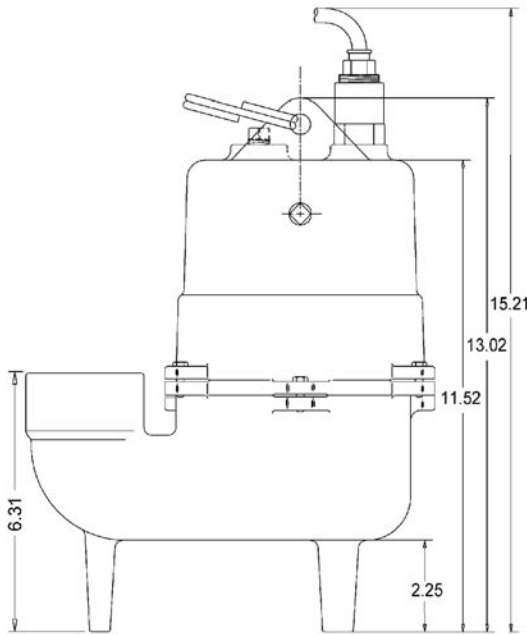
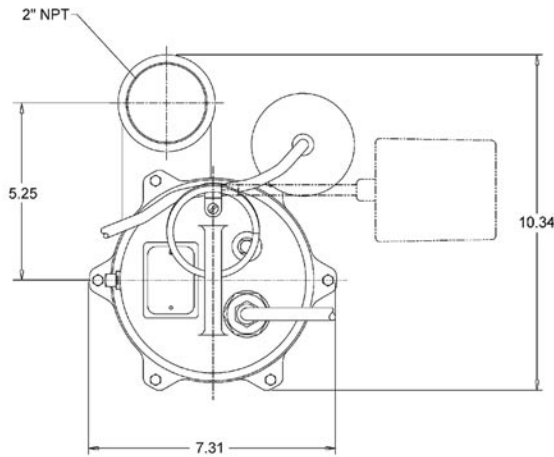


# Pumps (Sewage)

## P-SS-41T

### Features

- Cast iron construction
- Carbon/ceramic mechanical seal
- Piggy-back style float for automatic or manual operation
- Oil-filled motor with automatic reset overload provides safe operation
- Ball bearing construction for long life
- Designed for septic effluent applications



### Specifications

**Capacities:** 57 GPM @ 10' head

**Heads:** To 18'

**Motor:** 4/10 HP (1550 RPM); Shaded pole with thermal overload

**Electrical:** 115V, 12.5FLA, 1Ph, 60Hz

**Operation:** Tethered float

**Impeller:** Thermoplastic, vortex type

**Solids handling:** 2" (50.8mm)

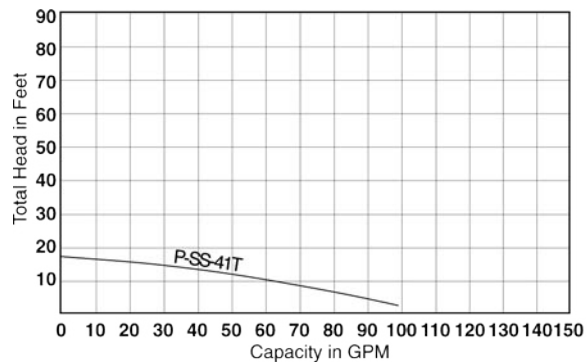
**Power cord:** 10' (3M) or 20' (6M) 16-3, SJTW-A/SJTW

**Discharge:** 2"

**Warranty for Defects in Material and Workmanship**

- 3 Years

AutoCad dwg files at [www.quanics.net](http://www.quanics.net)



**1-877-QUANICS - [www.quanics.net](http://www.quanics.net)**



© 2007, Quonics Inc. All rights reserved. Product(s) covered by one or more U.S. and/or International patents. Other U.S. and International patents may be pending.

