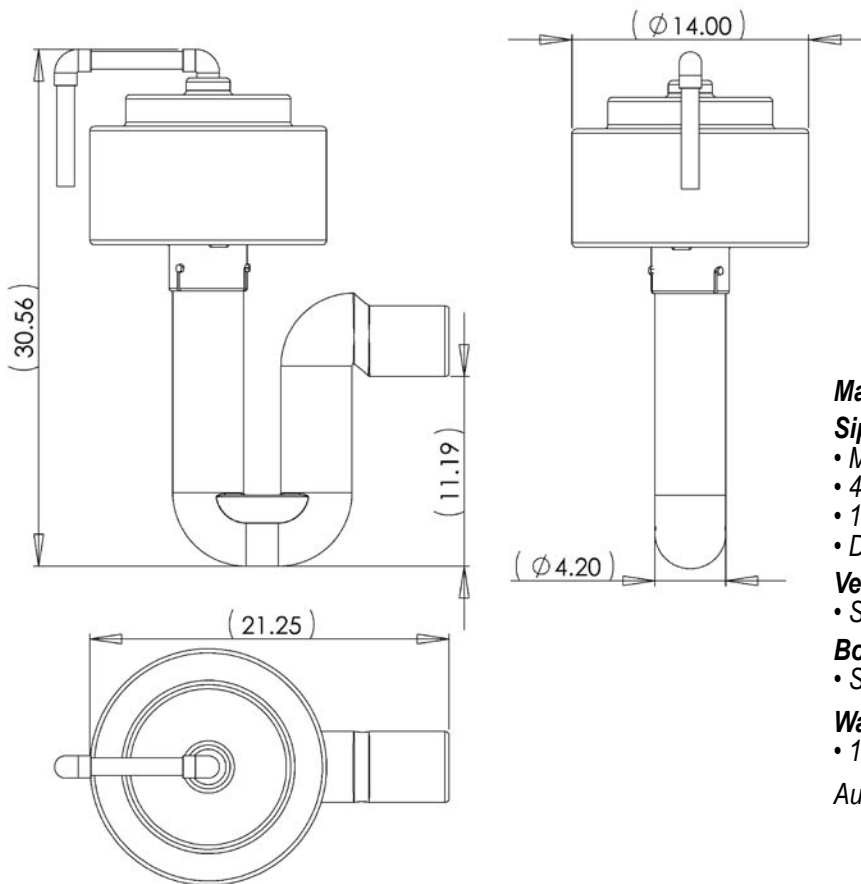
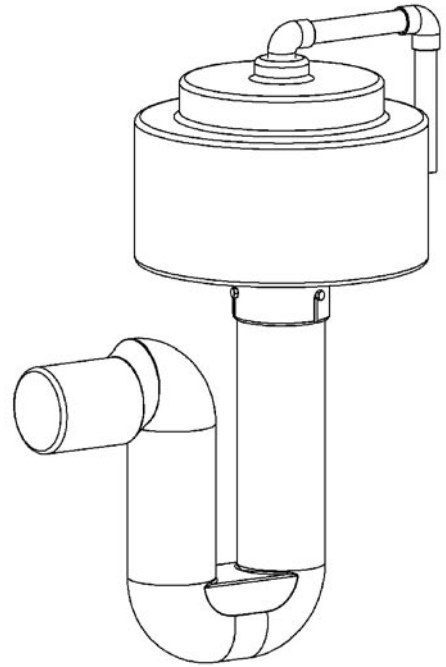


Dosing Siphon

GDS-DS-4T

Features

- Provide dosing and resting cycles to soil absorption fields, sand filters and other onsite systems without the use of electricity
- Installs directly into the tank via a variety of methods
- Operates only under conditions where discharge pipe runs flat or downhill from the siphon
- Contains no moving parts - operates on the hydraulic force of the liquid rising in the tank
- Performance:
 - 13" draw down
 - 140 gpm average discharge rate
 - 100 gpm minimum discharge rate



Materials:

Siphon trap and bell

- Molded from high density polyethylene plastic
- 4" diameter trap
- 14" diameter bell
- Discharge hub connects to 4" SDR 35 pipe

Vent piping

- SCH40 PVC pipe and fittings

Bolts

- Stainless steel

Warranty for Defects in Material and Workmanship

- 1 Year

AutoCad dwg files at www.quanics.net

1-877-QUANICS - www.quanics.net