

# Quanics

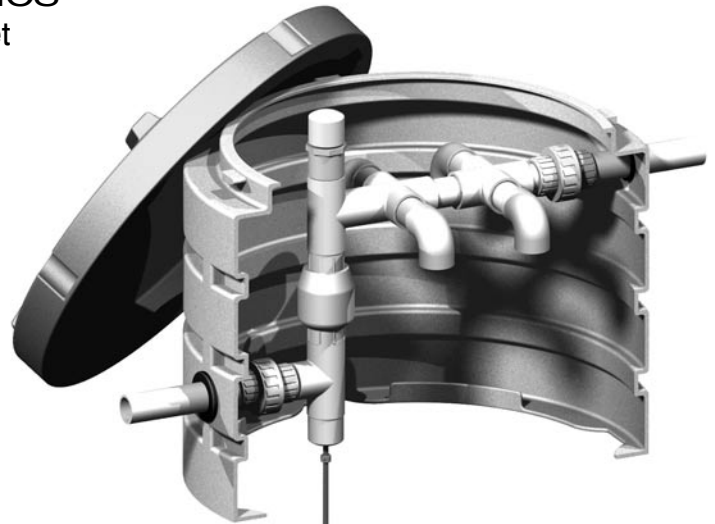
Engineering **Water** Solutions®

P.O. Box 1520  
Crestwood, KY 40014  
1-877-QUANICS  
www.quanics.net

## Installation Sheet

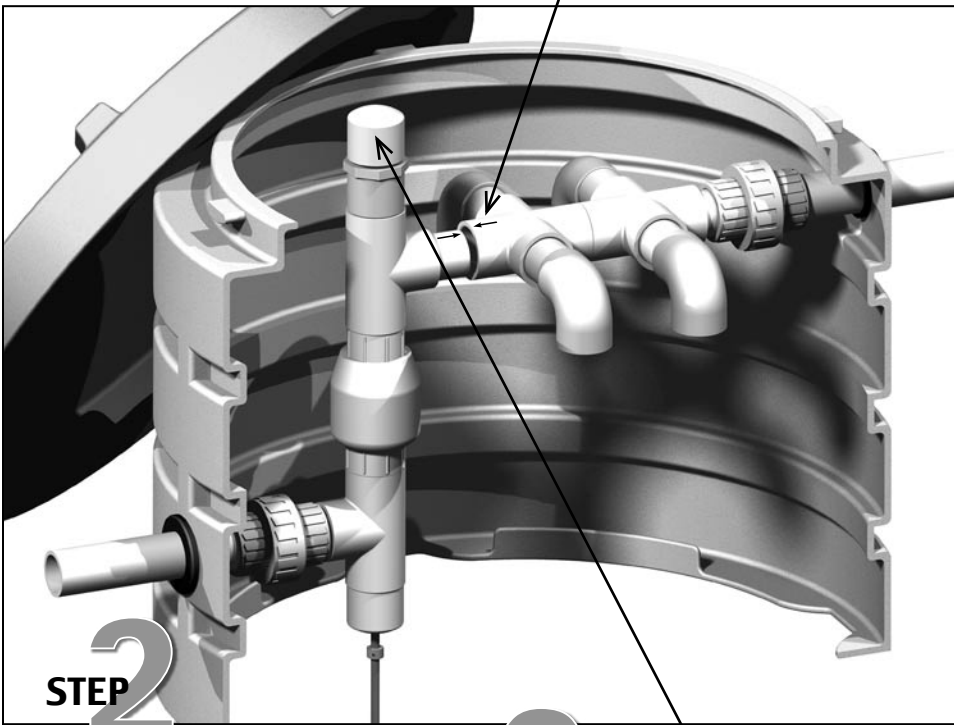
Gravity Recirculation Device

ATS-GRD-100/80/20



Dry fit all components to insure proper alignment before glueing all fittings as assembled.

**STEP 1** Match up arrows as shown

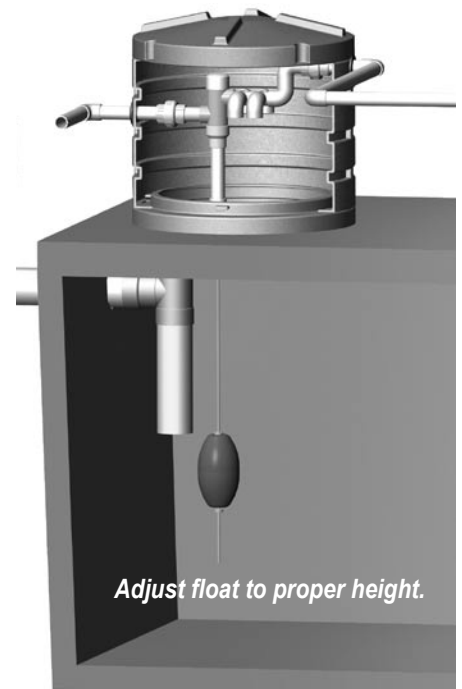


**STEP 2**

Make sure rod stand pipe is vertical for proper float operation.

**STEP 3**

Do not glue cap, this is an inspection port and a means to adjust rod collars if necessary.



**\*Note: All fittings must be primed and glued before use.**